



Content Management Server

CMS-SE

Quick Start Guide

快速安裝手冊

Contents

| | |
|--|-----------|
| 1. System Requirements..... | 02 |
| 2. Installing Ubuntu Linux | 02 |
| 3. Installing CMS software | 04 |
| 3.1 Installing CMS from DVD or USB flash drive | 04 |
| 3.2 Uploading CMS-SE Installer by SFTP | 05 |
| 4. Activating your CMS-SE | 08 |
| 5. Online Help | 09 |

1. System Requirements

OS: Ubuntu 64 bits 16.04 LTS

CPU: 2 GHz dual core processor or better

RAM: 2 GB system memory

HDD or SSD: 50 GB of free hard drive space

Installation media: Either a USB flash drive or DVD

Network: Highspeed Internet access is essential

2. Installing Ubuntu Linux

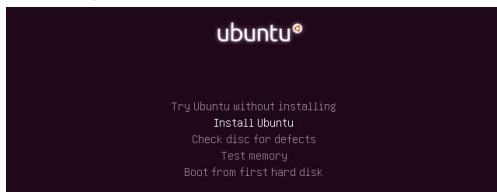
PLEASE NOTE THAT **BASIC LINUX KNOWLEDGE AND EXPERIENCE ARE REQUIRED TO PROCEED WITH THE FOLLOWING STEPS.**

Step 1 Download Ubuntu Linux from URL: <http://releases.ubuntu.com/16.04/>

Server edition: ubuntu-16.04.{x}-server-amd64.iso

Step 2 Install Ubuntu 64 bits 16.04 LTS

Please follow the installation guide on Ubuntu website to install the OS on a x86 computer, server, or VM.



NOTE

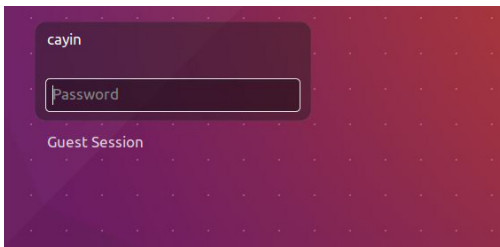
Please avoid using **administrator**, the reserved account of CMS-SE, as the username.

Please keep the default option unchanged while installing Ubuntu and be sure the **Download updates while installing Ubuntu** option is left unchecked.



Step 3 Log in to Ubuntu

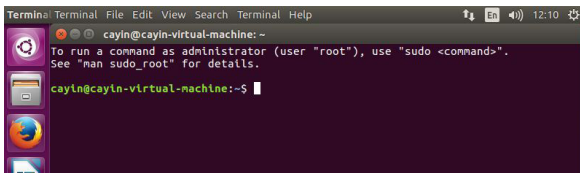
Once the installation is complete, log in to Ubuntu with the username and password created during the installation process.



Step 4 Open console window (command console)

Press **ctrl+alt+T** on your keyboard to open the console window.

Now, the Linux operating system has been installed. Please proceed installation of CMS software with steps in the next chapter.



NOTE

You will enter command console directly if you have installed the Server edition.

3. Installing CMS software

You can choose either one of the following methods and proceed accordingly to install CMS software.

3.1 Installing CMS from DVD or USB flash drive

Step 1 Install CMS software

Please insert a flash drive or a disc containing CMS-SE installer into the USB port or the DVD drive. Then, use the following commands to install CMS software:

```
$ sudo mkdir /mnt/cmsse
```

```
[sudo] password for your account: <enter your password>
```

```
$ sudo mount <your DVD/USB media path> /mnt/cmsse
```

```
$ sudo cp /mnt/cmsse/I_10.2.17165-ubuntu-16.04-amd64.run /mnt
```

```
$ sudo chmod 755 /mnt/I_10.2.17165-ubuntu-16.04-amd64.run
```

```
$ sudo sh /mnt/I_10.2.17165-ubuntu-16.04-amd64.run
```

NOTE

Please replace **<your DVD/USB media path>** with your real upload path. The file name **"I_10.2.17165-ubuntu-16.04-amd64.run"** may be changed due to firmware version change.

```
cayin@ubuntu:~$ sudo mkdir /mnt/cmsse
[sudo] password for cayin:
cayin@ubuntu:~$ sudo mount /dev/cdrom /mnt/cmsse/
mount: /dev/sr0 is write-protected, mounting read-only
cayin@ubuntu:~$ sudo cp /mnt/cmsse/I_10.2.17165-ubuntu-16.04-amd64.run /mnt/
cayin@ubuntu:~$ sudo chmod 755 /mnt/I_10.2.17165-ubuntu-16.04-amd64.run
cayin@ubuntu:~$ sudo sh /mnt/I_10.2.17165-ubuntu-16.04-amd64.run
```

DVD

```
cayin@ubuntu:~$ sudo mkdir /mnt/cmsse
[sudo] password for cayin:
cayin@ubuntu:~$ sudo mount /dev/sdb1 /mnt/cmsse/
cayin@ubuntu:~$ sudo cp /mnt/cmsse/I_10.2.17165-ubuntu-16.04-amd64.run /mnt/
cayin@ubuntu:~$ sudo chmod 755 /mnt/I_10.2.17165-ubuntu-16.04-amd64.run
cayin@ubuntu:~$ sudo sh /mnt/I_10.2.17165-ubuntu-16.04-amd64.run
```

USB

Step 2 Press any key to reboot the server after the installation is complete. Then you can login to the Web Manager of CMS in your PC browser.

3.2 Uploading CMS-SE Installer by SFTP

Step 1 Install SFTP service

- A. Close **apt-daily** service

```
$ sudo systemctl stop apt-daily.timer
```

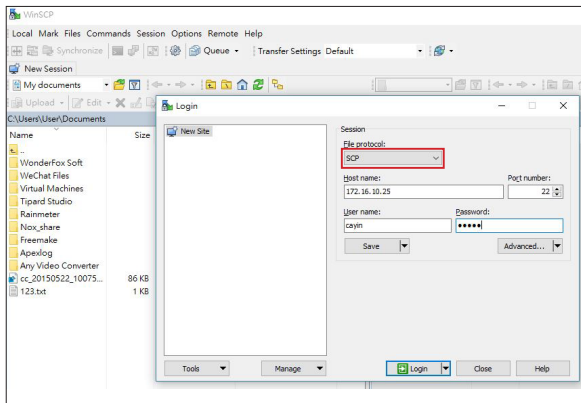
```
$ sudo systemctl stop apt-daily.service
```

- B. Update and install packages

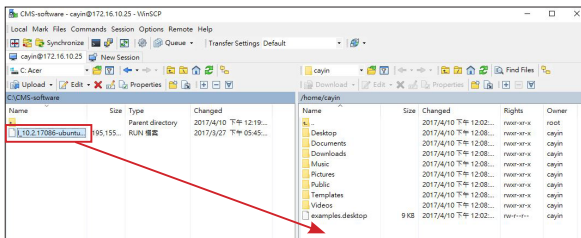
```
$ sudo apt-get update
```

```
$ sudo apt-get install openssh-server
```

Step 2 Use any SFTP software (e.g. Filezilla or Winscp) to connect to Ubuntu (you must have the IP address) and enter the username and password mentioned above. You must set transfer protocol to **SCP**.

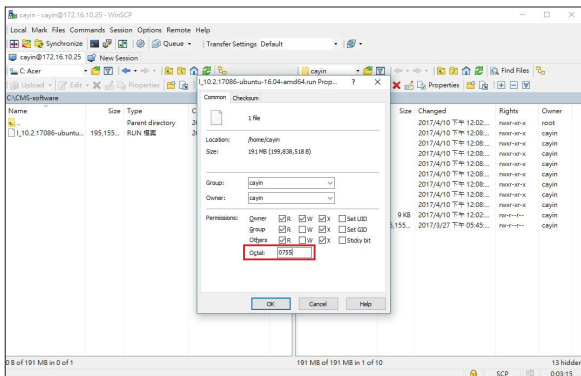


Step 3 Upload CMS installation file (l_10.2.17xxx-ubuntu-16.04-amd64.run) to Ubuntu. You can upload the file to any directory but we suggest uploading it to your user home folder.



NOTE
The file name "l_10.2.17xxx-ubuntu-16.04-amd64.run" may be changed due to firmware version change.

Step 4 Change the CMS installation file's attribute to **0755**. You can either do it on the FTP software or on the command console on Ubuntu.



Step 5 Install CMS Software. Open a remote-access program via SSH, such as Putty. Connect to CMS' s console remotely and use the commands in the instructions below to install CMS software via SFTP:

```
$sudo sh ./I_10.2.17xxx-ubuntu-16.04-amd64.run
```

```
[sudo] password for your account: <enter your password>
```

```
cayin@ubuntu:~$ sudo sh ./I_10.2.17165-ubuntu-16.04-amd64.run
[sudo] password for cayin: █
```

Step 6 Press any key to reboot the server after the installation is complete. Then you can login to the Web Manager of CMS in your PC browser.

- Default Username: **administrator**
- Default Password: **admin**

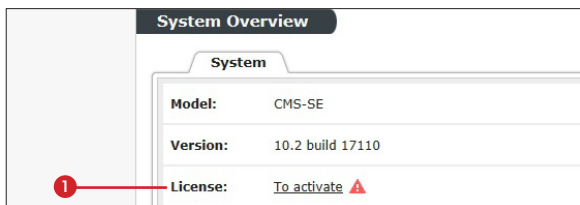
CAYIN

Copyright © CAYIN Technology Co., Ltd. All rights reserved.

4. Activating your CMS-SE

Once you are logged in, you will need to activate the software to complete the installation process, otherwise your CMS server can only manage one SMP player.

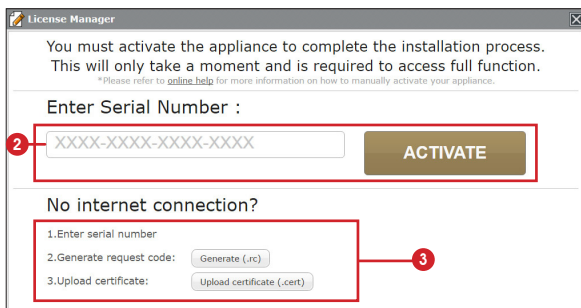
Step 1 Click on the **Activate** button in System Overview, under **System**>**License**.



Step 2 If the server has internet connection, enter your serial number and click **Activate**. The activation process should complete in a few seconds.

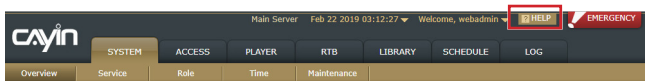
Step 3 If the server is not connected to the internet, enter your serial number and click **Generate**. You will have to mail the generated **.rc** file to your sales representative. Once your representative completes the activation, you will receive a reply with an activated **.cert** file. Choose the **.cert** file, and click **Upload**.

(Please refer to Online Help for more information on activating your CMS)



5. Online Help

The CMS-SE User's Guide provides more detailed information of all features. If you have questions about any specific function, please log in Web Manager, go to the configuration page of a specific function and click **HELP** on top of the window. Then the system will show you the reference information of that function.



CAYIN Technology Co., Ltd.

8F-2, No. 577, Linsen N. Rd.

Taipei City 104, Taiwan

TEL: +886-2-25951005

FAX: +886-2-25951050

<https://www.cayintech.com>

Copyright © 2019 CAYIN TECHNOLOGY CO., LTD. All Rights Reserved.

All contents in this manual are the intellectual property of CAYIN Technology Co., Ltd. All brand names, icons, and trademarks that are not the property of CAYIN Technology are the property of their respective holders.

目 錄

| | |
|-------------------------------------|-----------|
| 1. 系統需求..... | 11 |
| 2. 安裝 Ubuntu Linux 作業系統..... | 11 |
| 3. 安裝 CMS 軟體..... | 13 |
| 3.1 由 DVD 光碟或 USB 隨身碟安裝 CMS..... | 13 |
| 3.2 由 SFTP 上傳 CMS-SE 安裝程式 | 14 |
| 4. 啟用 CMS-SE 軟體 | 17 |
| 5. 線上說明..... | 18 |

1. 系統需求

OS: Ubuntu 64 bits 16.04 LTS

CPU: 2 GHz 雙核心或以上處理器

RAM: 2 GB 系統記憶體

HDD 或 SSD: 50 GB 可用硬碟空間

安裝媒介: USB 快閃磁碟機或 DVD 光碟機

網路: 高速網際網路連結是必須的

2. 安裝 Ubuntu Linux 作業系統

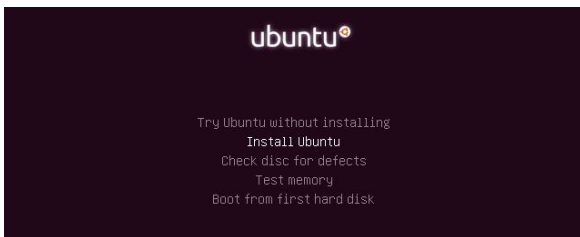
請注意！您必須具備基本 Linux 作業系統的操作經驗與知識，來進行下列安裝步驟。

步驟 1 由下列連結下載 Ubuntu Linux：<http://releases.ubuntu.com/16.04/>

伺服器版 (Server edition)：ubuntu-16.04.{x}-server-amd64.iso

步驟 2 安裝 Ubuntu 64 bits 16.04 LTS

請依循 Ubuntu 網站的安裝指示，將 Linux 作業系統安裝在一個 x86 電腦、伺服器或虛擬機器 (VM) 裡。



注意

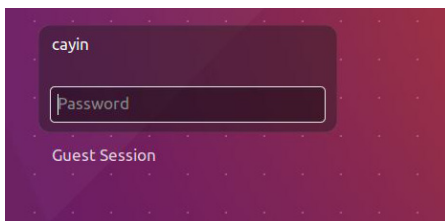
請避免使用 CMS-SE 保留帳號 " administrator " 為使用者名稱。

安裝過程中，請勿改變所有預設選項，並確認 **Download updates while installing Ubuntu** 這個項目保持無勾選的狀態。



步驟 3 登入 Ubuntu

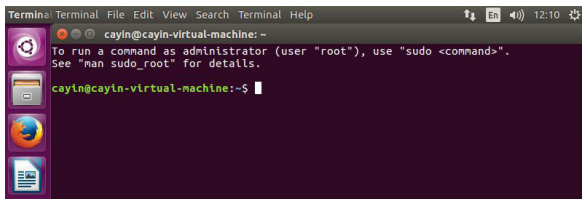
軟體安裝完成後，請使用安裝過程中建立的使用者名稱與密碼登入 Ubuntu。



步驟 4 開啟控制台視窗 (指令控制台)

使用鍵盤上 **ctrl+alt+T** 的組合鍵開啟控制台視窗。

如此已完成安裝作業系統，請再依下一章節內的步驟繼續安裝 CMS 軟體。



注意

若您安裝的是伺服器版軟體，登入後將會直接進入指令控制台。

3. 安裝 CMS 軟體

您可以選擇下列二種方式之一安裝 CMS 軟體，請依相對應的步驟進行安裝。

3.1 由 DVD 光碟或 USB 隨身碟安裝 CMS

步驟 1 先插入含 CMS-SE 安裝檔案的 USB 隨身碟或 DVD 光碟，使用下列指令由 DVD 光碟或 USB 隨身碟來安裝 CMS 軟體：

```
$ sudo mkdir /mnt/cmsse
[sudo] password for your account: <enter your password>
$ sudo mount <your DVD/USB media path> /mnt/cmsse
$ sudo cp /mnt/cmsse/I_10.2.17165-ubuntu-16.04-amd64.run /mnt
$ sudo chmod 755 /mnt/I_10.2.17165-ubuntu-16.04-amd64.run
$ sudo sh /mnt/I_10.2.17165-ubuntu-16.04-amd64.run
```

注意

請置換 <your DVD/USB media path> 為實際上載的路徑。指令中的
“I_10.2.17165-ubuntu-16.04-amd64.run” 檔案名可能會依韌體版本不同而改變。

```
cayin@ubuntu:~$ sudo mkdir /mnt/cmsse
[sudo] password for cayin:
cayin@ubuntu:~$ sudo mount /dev/cdrom /mnt/cmsse/
mount: /dev/sr0 is write-protected, mounting read-only
cayin@ubuntu:~$ sudo cp /mnt/cmsse/I_10.2.17165-ubuntu-16.04-amd64.run /mnt/
cayin@ubuntu:~$ sudo chmod 755 /mnt/I_10.2.17165-ubuntu-16.04-amd64.run
cayin@ubuntu:~$ sudo sh /mnt/I_10.2.17165-ubuntu-16.04-amd64.run
```

DVD

```
cayin@ubuntu:~$ sudo mkdir /mnt/cmsse
[sudo] password for cayin:
cayin@ubuntu:~$ sudo mount /dev/sdb1 /mnt/cmsse/
cayin@ubuntu:~$ sudo cp /mnt/cmsse/I_10.2.17165-ubuntu-16.04-amd64.run /mnt/
cayin@ubuntu:~$ sudo chmod 755 /mnt/I_10.2.17165-ubuntu-16.04-amd64.run
cayin@ubuntu:~$ sudo sh /mnt/I_10.2.17165-ubuntu-16.04-amd64.run
```

USB

步驟 2 安裝完成後，請按任意鍵重新啟動伺服器。然後您將可以由個人電腦的瀏覽器登入 CMS 伺服器的管理介面 Web Manager。

3.2 由 SFTP 上傳 CMS-SE 安裝程式

步驟 1 安裝 SFTP 服務

A. 關閉 **apt-daily** 服務

```
$ sudo systemctl stop apt-daily.timer
```

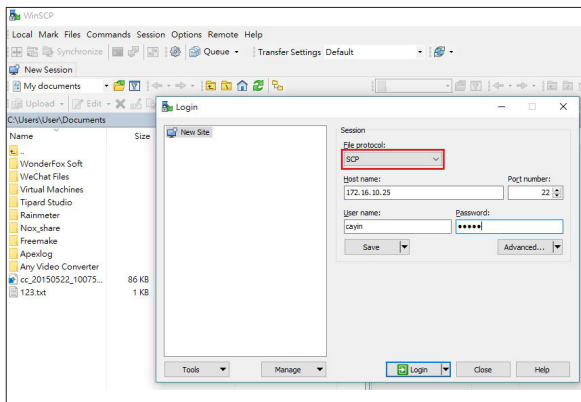
```
$ sudo systemctl stop apt-daily.service
```

B. 更新與上傳套件

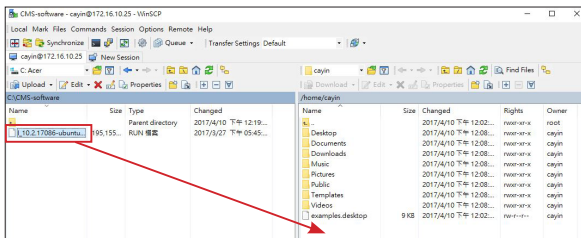
```
$ sudo apt-get update
```

```
$ sudo apt-get install openssh-server
```

步驟 2 使用 Filezilla、Winscp 或任一 SFTP 軟體連結 Ubuntu (你必需有 IP 位置)，並輸入之前提到登入 Ubuntu 所使用的使用者名稱與密碼。你必須將檔案協定設定為 **SCP**。

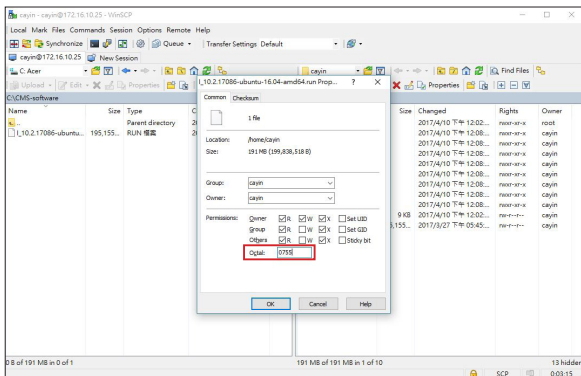


步驟 3 上傳 CMS 安裝檔案 (`_10.2.17xxx-ubuntu-16.04-amd64.run`) 至 Ubuntu。您可以將檔案上傳至任何目錄裡，但我們建議上傳至您的主資料夾 (home folder)。



注意
CMS 安裝檔案名 “`_10.2.17XXX-ubuntu-16.04-amd64.run`” 可能會依韌體版本不同而改變。

步驟 4 修改 CMS 安裝檔的屬性為 **0755**。你可以選擇在 FTP 軟體或 Ubuntu 的指令控制台裡修改。



步驟 5 安裝 CMS 軟體。打開 SSH 遠端連線軟體 (如 putty)，遠端登入到 CMS 的控制台 (console)，再使用下列指令由 SFTP 來安裝 CMS 軟體：

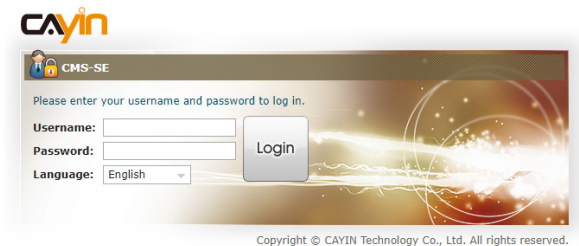
```
$sudo sh ./I_10.2.17xx-ubuntu-16.04-amd64.run
```

```
[sudo] password for your account: <enter your password>
```

```
cayin@ubuntu:~$ sudo sh ./I_10.2.17165-ubuntu-16.04-amd64.run
[sudo] password for cayin: █
```

步驟 6 安裝完成後，請按任意鍵重新啟動伺服器。然後您將可以由個人電腦的瀏覽器登入 CMS 伺服器的管理介面 Web Manager。

- 預設的使用者名稱：**administrator**
- 預設的密碼：**admin**



4. 啟用 CMS-SE 軟體

當您首次登入本機時，必須啟用軟體才能完成安裝程序，並使用軟體的完整功能。
未完成啟用的 CMS，只能連接並管理一台 SMP 播放器。

步驟 1 請點擊系統概要 > 系統 > 韌體憑證中的**立即啟用**。



步驟 2 確定網路已連線後，請輸入軟體序號 (Serial Number) 並點擊啟用。

步驟 3 若您的機器無法連線至網路，或是線上啟用無法辨識網路時，請輸入軟體序號並點擊產生認證碼；.rc 認證檔產生後，請手動 email 至您的銷售人員信箱，您的銷售人員將會進行認證程序並提供 .cert 憑證檔，請選擇憑證檔，並點擊上傳憑證。

(欲瞭解手動啟用詳情，請參閱線上手冊。)



5. 線上說明

CMS-SE 的線上使用說明能提供所有功能的詳盡解說。若您對於某項功能的操作方式有疑問，請登入 Web Manager 並進往該功能的設定頁，然後點擊位於視窗上方的【求助】，系統將會顯示該功能的使用說明頁。



鎧應科技股份有限公司

104 台北市中山區林森北路 577 號 8 樓之 2

電話：(02) 2595 1005

傳真：(02) 2595 1050

<https://tw.cayintech.com>

著作權 © 2019 鎧應科技股份有限公司。版權所有。

本手冊的所有內容，其著作財產權歸鎧應科技股份有限公司所有。使用手冊中所提到的非鎧應科技的產品、名稱或註冊商標，均屬於其合法註冊公司所有。



TEL: +886-2-25951005 FAX: +886-2-25951050

<http://www.cayintech.com>

電話 : (02) 2595 1005 傳真 : (02) 2595 1050

<http://tw.cayintech.com>