



SMP

SMP-2400

Unleash Flexibility with
CAYIN Digital Signage Player

Product Highlights

- Equipped with HDMI outputs for 2-3 displays
- 3 playback modes: zone-type, individual programs, or playlists
- Support 4K HDMI video, YouTube Video, PDF, HTML5, CSS3, weather, social media, etc.
- Unlimited Video zones, Image zones, and Ticker zones*
- Support 4 signal output modes: Single, Clone, Extended, Distinct Modes
- Offer flexible task scheduling based on once, daily, weekly, monthly, or yearly timescales
- Allow self-designed template creation either directly on SMP player or on your PC
- Integrate facial recognition technology to deliver personalized content (requiring QNAP QVR Face Tiger)
- Double the Convenience with 2 Type-C Ports for Seamless External Storage Connectivity
- Experience Lightning-Fast Performance: SMP-2400 Delivers Up to 250% Faster Processing Power Compared to SMP-2300
- Experience Unmatched Speed: SMP-2400's SSD Interface Evolution Ensures Lightning-Fast Data Transfers for Seamless Performance
- Support 2 LAN ports for advanced management & network security *Depending on your video resolution, codec, bitrates and hardware spec.

Robustie Solution

The Robustie Solution brilliantly equips industrial-grade hardware and professional software to provide a professional and robust solution to users with diverse project needs. CAYIN SMP players, the core member of the Robustie solution, are designed to work standalone to play programmed content on displays while fulfilling the requirements of smaller-scale digital signage applications.



Your Gateway to Dynamic Content Playback

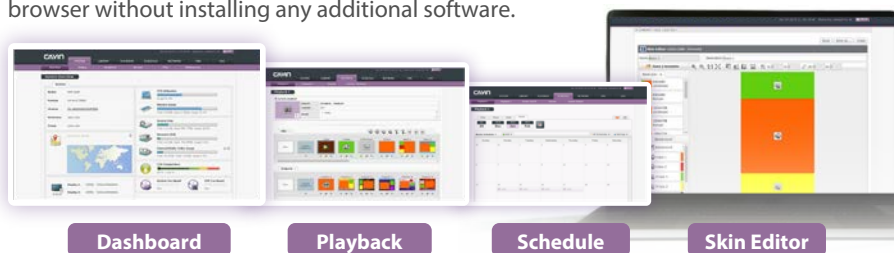
SMP-2400 is the ultimate solution for captivating messaging across diverse media. From stunning 4K HDMI videos to interactive PDFs, this versatile player ensures your content leaves a lasting impression. Seamlessly integrate multimedia formats like YouTube videos, HTML5 web pages, images, music, and text tickers to craft engaging displays that captivate your audience.



With the ability to stream real-time HD video and connect to external devices through HDMI capture cards (sold separately), the SMP-2400 empowers you to elevate your digital signage experience. Expand beyond promotional videos to include dynamic content such as news

Ready-to-use Digital Signage Player

SMP-2400 Digital Signage Player, the industrial-grade hardware, is bundled with dedicated digital signage software, SMP-NEO2, as a complete media player for digital sign applications. SMP-2400 and SMP-NEO2 are optimized to work well together. Not only will you enjoy a seamless user experience, but you can also manage the device remotely from your web browser without installing any additional software.



HDMI Video Outputs Widely Broadening Applications

Digital signage player can control 3 screens in both portrait and landscape orientation for most popular or even user-defined resolutions.

4 Signal Output Modes Widely Broadening Applications:

Single Mode:
connect to one screen



Clone Mode:
present identical contents on three screens



Extended Mode:
link two screens together and present content stretching across three screens

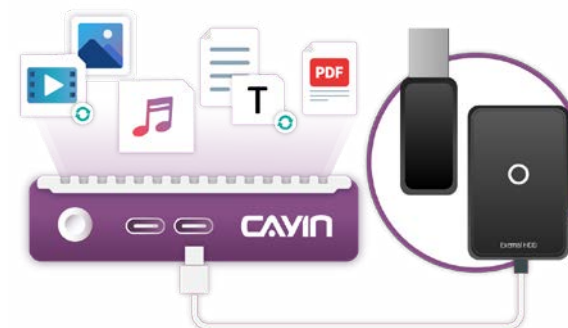


Distinct Mode:
present different contents on three screens



Dual Type-C Ports for Seamless Storage Connectivity

Upgrade your digital signage setup with the unparalleled convenience offered by SMP-2400's dual Type-C ports. These versatile ports ensure seamless connectivity for external storage devices, doubling the convenience for managing your media files, data backups, and content updates. Whether you're transferring large video files or accessing important documents, experience effortless connectivity and swift data transfers with SMP-2400, empowering you to streamline your workflow and enhance your digital signage experience to new heights.



SSD Interface Evolution Ensures Lightning-Fast Data Transfers

Dive into a realm of unparalleled speed and performance with SMP-2400's revolutionary SSD interface evolution. This cutting-edge technology guarantees lightning-fast data transfers, ensuring your digital signage operates at peak efficiency without any bottlenecks. Whether you're uploading large multimedia files or syncing critical data in real-time, SMP-2400's SSD interface evolution delivers unmatched speed and reliability, empowering you to create seamless, high-performance signage solutions that captivate your audience and elevate your brand presence.



Experience 250% Smoother Performance

Experience a quantum leap in performance with SMP-2400, boasting an astonishing 250% increase in processing power compared to its predecessor, the SMP-2300. Enjoy enhanced computing capabilities that result in smoother operation and seamless content playback. With SMP-2400, your digital signage experience reaches new heights of efficiency and effectiveness.

Mobile and Place-Based Digital Signage

SMP-2400 Digital Signage Player can integrate with 4G/3G and GPS technology to provide mobile and location-based solutions. Players installed in moving vehicles can playback contents based on both time and location. Administrators can also locate each player on Google Maps and instantly have an idea of the overall connection status of all media players.



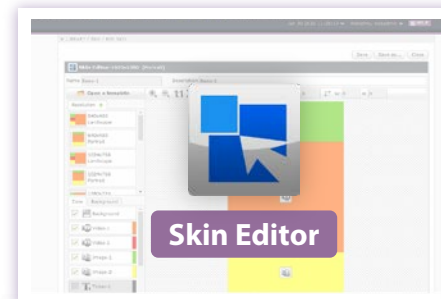
Rich Library and Cloud Resources

All necessary raw materials, including multimedia files, fonts, clocks, skins, programs, and playlists, can be accessed easily in the Library to assist you in organizing resources. The system allows you to upload your desired fonts and even download the latest templates from CAYIN's Cloud service for free to greatly enrich your content.



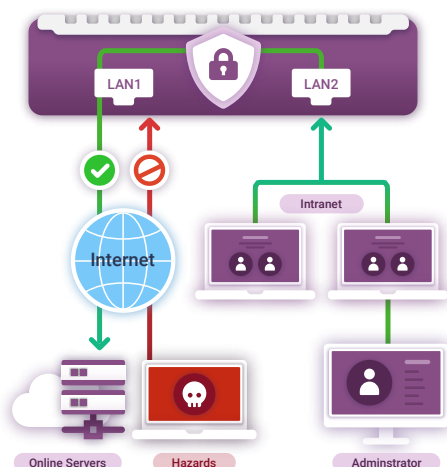
Easy-to-Use Template Creation in Two Ways

With SMP-NEO2, SMP-2400 Digital Signage Player provides a web-based Skin Editor so that users can perform a drag-and-drop operation to define the size and the location of each zone directly on SMP players. Through Skin Editor, you can customize the screen resolution to meet your needs, including screen orientation and multi-display setup.



In addition, experienced web designers can also utilize any web-editing tool to create HTML pages for the greatest flexibility.



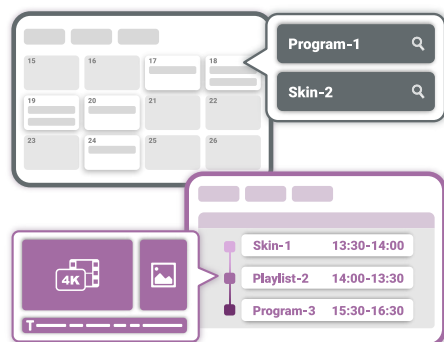


Dual LAN Ports Collaborate with Firewall Strengthen Security

SMP-2400 digital signage player is equipped with two LAN ports. One port can be used to access the Internet with the inbuilt firewall, while the other port can be used to log into SMP's web-based management interface through a local area network. Administrators can not only avoid the hazards from the internet, but also manage SMP players within a secure LAN. This leading design offers a safer and more flexible network planning for large-scale digital signage projects.

3 Playback Modes for All Occasions and Applications

You can divide the screen into several zones, each media assigned with independent schedules and settings. If you simply want to deliver a full-screen presentation as a digital poster, you can create playlists to display different multimedia contents in order.



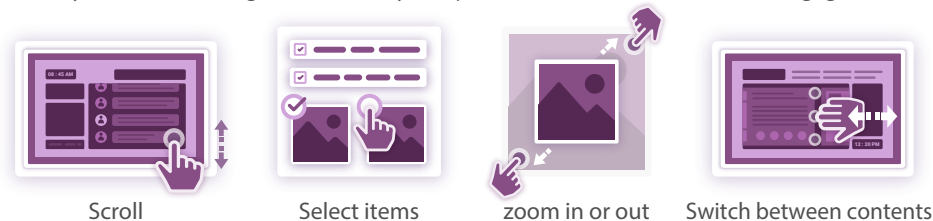
2 Viewing Modes for Playback Scheduling: Calendar and Timetable

You can insert a one-time event or arrange periodic tasks based on daily, weekly, monthly or yearly timescales. You can assign a date, a time period, or even a day in a specific week of a month (e.g. 2nd Sunday in May).

Location-based scheduling or central scheduling through a CMS server is also available to increase the flexibility.

Support Intuitive Multi-Touch Gestures

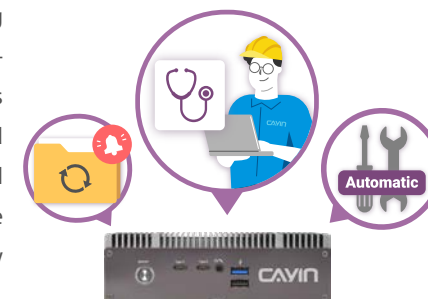
SMP Digital Signage Player support integration with HID compliant touch panels and multi-touch gestures. Users can tap, swipe, pinch or spread one or two fingers to click, change, zoom in or out web pages. Thus, digital signage can interact with customers in a more intuitive way. You may also create your own custom gestures to suit your specific needs and drive customer engagement.



Instant Remote Diagnostics and Preliminary Maintenance

Administrators can perform troubleshooting remotely by retrieving log records and monitoring key operational activities, such as system resource usage, CPU temperature, and network topology. To obtain the optimal performance and functionality, users will be prompted to install patches whenever new software updates are available.

If an abnormal situation occurs, SMP-2400 Digital Signage Player is equipped with a self-repair mechanism to restart the system automatically. Administrators can also restore configurations or recover a system immediately when necessary.



CMS-SE Server

With CMS-SE, administrators can manage players in groups, and perform live video streaming, central scheduling, emergency mode, access right management, and content updates of multiple players simultaneously.



Flexible Platform for Extended Integration

SMP-2400 Digital Signage Player can be integrated with other external devices to meet requirements from diversified vertical markets.



Facial Detection & Digital Signage



Interactive Digital Signage



Web Technologies & Digital Signage



Retail Digital Signage



Multi Video Output & Video Wall



Live Feed & Digital Signage



Location Based Digital Signage



Smartphone & Digital Signage



Web SDK



PDF Available



Social Media



Weather

System Specifications

System software	SMP-NEO2 v4.0	
Content Creation	Zone type	<ul style="list-style-type: none"> • Able to use CAYIN Skin Editor to create templates either directly on SMP players or on your PC • Display zone: <ul style="list-style-type: none"> • Video zone x 2 (video file/streaming/audio) • HTML zone x 3 • Image zone x 2 • Ticker zone x 2 • Clock zone x 1 • Background image x 1
	Full-screen	<ul style="list-style-type: none"> • Use any web-editing tool to create HTML pages with unlimited Video zones, Image zones, and Ticker zones (*Depending on Hardware Spec)
Multimedia Playback	Playback modes	<ul style="list-style-type: none"> • 3 options: Skin, Program, and Playlist
	Web Pages	<ul style="list-style-type: none"> • Browser: Firefox • Web language: support HTML 5⁽¹⁾, JavaScript and RSS/ ATOM Feed • CAYIN Media Player (Video and Audio), CAYIN Ticker, CAYIN Image Slideshow • Content: show whole or part of HTML/ PDF, remote URL, weather, social media or integrate with users' network facilities and
	Streaming Video	<ul style="list-style-type: none"> • CAYIN RTB (MPEG4-TS, MPEG2-TS; bit-rate: 1~5 Mbps) • RTSP (codec: H.264; bit-rate: 1~20 Mbps) • RTP (MPEG-2, MPEG-4, bit rate: 1~10 Mbps) • HTTP/MMS

⁽¹⁾ The compatibility is based on the built-in Firefox browser.

Multimedia Playback	Video Files	<ul style="list-style-type: none"> • Format: MPEG (MPG, VOB), AVI (H.264), WMV, MP4 • Codec: MPEG-1/2, MPEG-4 ISO, WMV 7/8/9, H.264, H.265(HEVC) • Bit-rate: up to 40 Mbps, 60 fps (MPEG2, MPEG4, WMV, H.264) for 1080p, 65 Mbps, 60 fps (H.264, H.265) for 4K UHD • Resolution: up to 4K UHD 60 fps
	Audio Files	<ul style="list-style-type: none"> • Format: WMA, MP3 • Codec: MP3, WMA 7/8, AAC, Vorbis
	Image Files	<ul style="list-style-type: none"> • Format: JPEG/ GIF/ BMP/ SVG
	Preview	<ul style="list-style-type: none"> • Playback simulator: image, HTML, remote URL, and ticker (Note: Simulation is for reference only. Actual display may differ.) • File preview: show thumbnails for image and video files
	Face Detection	<ul style="list-style-type: none"> • Software: integrate with QVR Face Tiger 1.0.1.0 or later • Layout: show triggered contents in full screen or within a video zone of a skin or program • Playback Content: program, playlist, video, image, and HTML/Flash
Schedule	Playback	<ul style="list-style-type: none"> • Local & central scheduling: edit schedules directly on an SMP player or centrally control multiple players in groups by a CMS server • View type: calendar or time table • Schedule mode: once, daily, weekly, monthly, yearly, and location • Playback type: able to edit scheduled tasks for each zone or as a full-screen display
	Screen,Brightness , volume & system	<ul style="list-style-type: none"> • Set schedules to turn on/off the screen, adjust SMP's volume and brightness, or restart the system
Content Update	Methods	<ul style="list-style-type: none"> • Online (manually): FTP, Network Shares (Network Neighborhood), SMP's Web Manager • Online (automatically): CAYIN CMS server • Offline: USB Storage Device
System Settings	Language	<ul style="list-style-type: none"> • User Interface: Chinese (Traditional), Chinese (Simplified), English, French, German, Italian, Japanese, Polish, Portuguese, Russian, Spanish, Thai • Ticker Support: Unicode (UTF-8) compatible languages; able to use default fonts or upload TTF fonts⁽²⁾.

⁽²⁾ CAYIN doesn't guarantee that SMP-NEO2 is compatible with all font files.

System Settings	Display	<ul style="list-style-type: none"> • Screen resolutions: 640x480, 800x600, 1024x768, 1152x864, 1280x720 (720p), 1280x768, 1280x1024, 1360x768, 1366x768, 1600x900, 1600x1200, 1680x1050, 1920x1080, 1920x1200, 1920x1440, 3840x2160 (60Hz, Single/Clone); up to 4096 pixels for one side by User-defined mode • Portrait Mode: Support 90 and 270 degree display rotation • 4 signal output modes: Single, Clone, Extended, Distinct Modes • Support to detect EDID/DDC parameters • Support the screensaver function • Support to incorporate with USB HID compliance touch screen and multi-touch gestures
	Time	<ul style="list-style-type: none"> • Set system time manually or synchronize the clock from an NTP server
	Location	<ul style="list-style-type: none"> • Track SMP's current location by GPS or simply show a static location in Google Maps
Remote Diagnostics and Maintenance	Hardware Monitor	<ul style="list-style-type: none"> • Check CPU temperature and utilization of CPU, system DRAM, and hard drive
	Log	<ul style="list-style-type: none"> • Create log files recording the system status • Able to purchase SuperReporter 2 to generate advanced playback reports
	System Update	<ul style="list-style-type: none"> • Automatic notification of patch and firmware updates
	Self-repair	<ul style="list-style-type: none"> • Able to restart/shutdown/recover the system and backup/restore configurations remotely.
Network	Protocol	<ul style="list-style-type: none"> • Support static IP and dynamic IP (DHCP) • Support HTTP, HTTPS, SMB, ICMP, RTP, RTSP, MMS, SYSLOG, NTP, FTP • Built-in Firewall Management
Resources	Cloud-based	<ul style="list-style-type: none"> • Provide templates and materials in Library and Online Resources
Web Manager	Recommended browsers	<ul style="list-style-type: none"> • Edge 88 or later, Chrome 88 or later , Firefox 85 or later

Hardware Specifications

CPU	• INTEL® Elkhart Lake Quad-Core Processor
Dimension	• 159 (W) x 108(D) x 48 (H) mm
Weight	• 1.09 Kg
Network	• 2.5GbE Ethernet • 802.11 b/g/n/ac Wireless controller (optional) • 3G/4G Data Network (optional)
Internal Storage	• SSD 128GB (Optional Upgrade: up to 256GB)
External Storage	• Supports up to 4TB
Video	• HDMI x 2 • DP x 1
Audio	• Phone Jack (Analog Stereo) • HDMI Audio (Digital)
Support Video Streaming	• HDMI Capture Card (USB UVC compatible device, Format: MJPG)*
Power	• 100~240V AC (with external adaptor) • DC 12V, 3.3A
Others	• RS-232 (COM) x 1 • USB 3.1 x 2 • USB 2.0 x 1 • USB (Type-C) x 2
Peripherals	• Wall mount bracket x 1 (compatible with VESA 75x75/100x100)
Certificate	• CE, FCC, RoHS, CB, BSMI

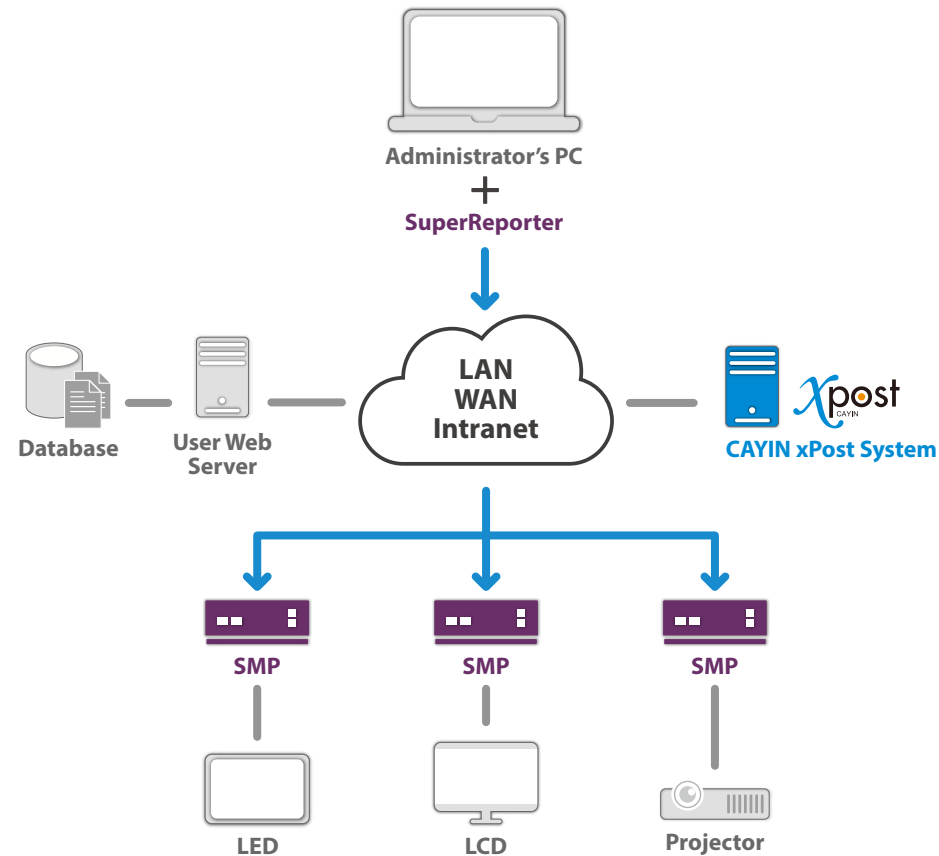
* Please refer to online help for more information.



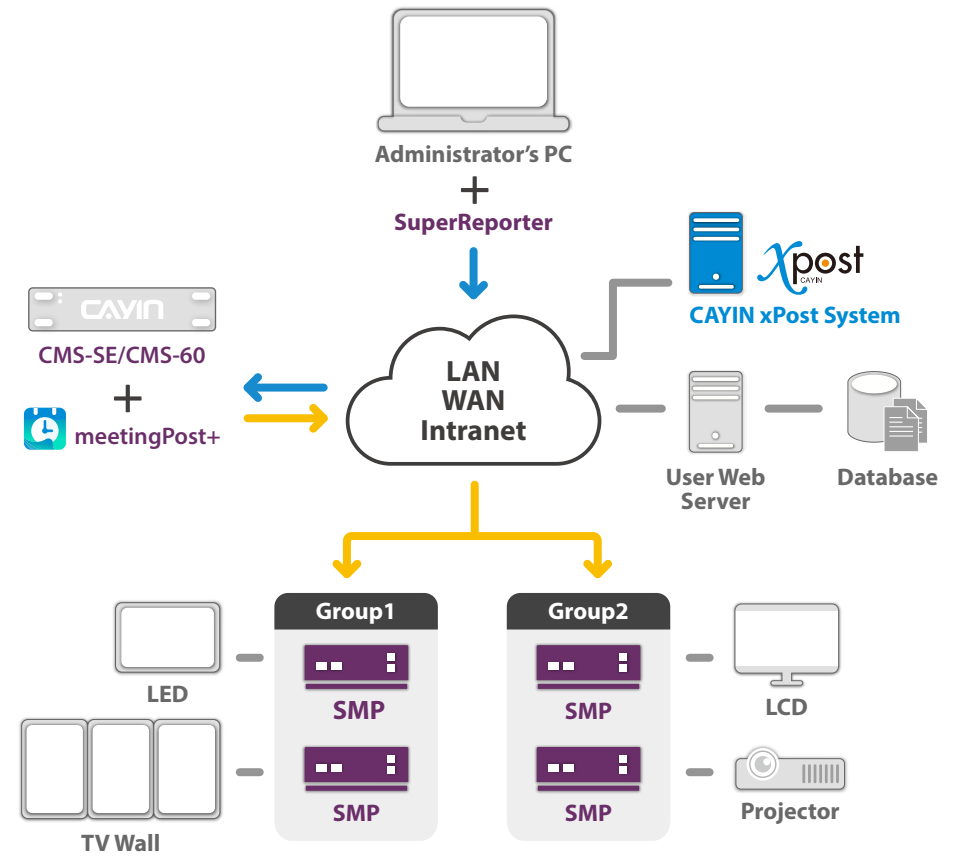
- | | | | |
|--------------------|-------------------|----------------------------------|---------------|
| 1 Power Button | 2 USB(Type-C) x 2 | 3 Microphone (function disabled) | 4 USB 3.1 x 2 |
| 5 USB 2.0 x 1 | 6 Power Connector | 7 HDMI x 2 | 8 DP x 1 |
| 9 Ethernet LAN x 2 | 10 RS-232 | | |

System Structure

Networked Standalone Digital Signage Player



Digital Signage Network with Client-Server Structure (CMS server + SMP player)



← Distribute Content / Scheduling

← Upload Content / Scheduling

CAYIN CAYIN Technology Co., Ltd.

3F., No. 57, Sec. 3, Zhongshan N. Rd., Zhongshan Dist., Taipei City 104027, Taiwan TEL: +886-2-25951005 FAX: +886-2-25951050

sales@cayintech.com <https://www.cayintech.com>

CAYIN Technology CAYIN Technology CAYIN Technology @CayintechPress

DP2310EN202310